



Sedley News

Sedley Day Care—the Fundraising Begins!

In 2010 a dedicated group of Sedley residents initiated the development of the Sedley Day Care Task Force. This group lobbied the provincial government for much needed funds to open a day care in our community - to no avail.

Village Council and the Day Care Task Force both agree that a day care in Sedley is an integral part of our strategic plan and our vision for growth and have decided to take matters into our own hands and **JUST DO IT!**

The business plan developed by the Day Care Task Force revealed initial start-up for funding our day care will cost between \$300,000 and \$400,000.

Fundraising has begun

and there are a variety of levels of contribution:

Bronze: up to \$1,000

Silver: \$1001 - \$5000

Gold: \$5001 - \$50,000

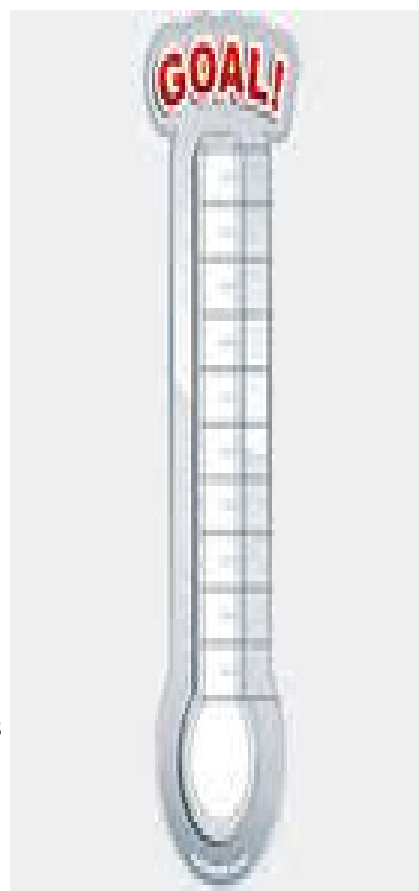
Platinum: \$50,001 and up

A Platinum level contribution will enable naming rights of the Day Care. Corporate and private sponsors are being approached and we need your help!

Donations can be made at the Village Office and tax receipts will be issued for donations over \$20.

If you wish to join the Day Care Task Force or if you have any fundraising ideas, please contact Shauna Forbes at 885-4604 or Samantha Gillies at 885-2133.

\$400,000



Sedley News

Volume 11, Issue 1

February 2012

Special points of interest:

- Day Care Fundraising Begins
- Recycling News
- Prairie Lily Terrace Board Members needed
- School Zone Rules

Inside this issue:

Sedley Day Care	1
School Zone Rules	2
Eye on Recycling	2
Sedley Housing	3
Outstanding Utilities	3
Sedley Landfill	3
Sedley Council	4

STOP - LOOK - SEE

“SHARING THE ROAD WITH SCHOOL BUSES”

In cities towns and villages, bus drivers are required to activate its red flashing lamps and extend the “STOP” arm when loading or unloading children. When approaching a school bus, begin to slow down as soon as the flashing red stop lamps come on, so the bus driver can see you are going to stop. If you are behind the bus you may not pass once the flashing lights are activated.

If you are approaching the bus from the opposite direction and you are too close to stop you may pass the bus if you do so before the stop arm is extended.

ONCE THE STOP ARM IS OUT YOU MUST STOP!!

When approaching a bus that has its stop arm out and its flashing

lights activated, as a driver:

You must stop no closer than 5 M. (15 ft) from the front or back of the bus

You must not advance your vehicle until the bus driver turns off the flashing red stop lamps and deactivates the stop arm; and, Before moving, check to see that all children have safely crossed the roadway.

Passing a school bus with flashing lights is a serious offense and will result in a minimum fine of **\$360.00**

NOTE: Drivers do not have to stop for a school bus if you are travelling in the opposite direction on a divided highway; also, you are not required to stop for buses displaying the four-way hazard

lamps.

You are also reminded that the speed limit on Prairie Avenue in front of Sedley School is **30 km/h.**

Help keep our school children safe and keep these important safety rules in mind when traveling on Prairie Avenue.

Once spring has arrived, the speed hump will once again be installed on Prairie Avenue in front of the school.

Keep our children safe and **SLOW DOWN!!**



Eye on Recycling - Another Reminder



In the October, 2011 newsletter you were reminded about the lack of availability for recycling glass. We

have noticed that people continue to leave glass at the recycle bin which causes quite the mess when it falls and breaks. This is a great place to recycle your paper, cardboard, plastic, and tin cans. **It is NOT the place to recycle glass.** There is no place in Sedley to recycle glass at this time.

We understand the frustration when

you load up your recycling and the bin is full. If this happens to you, please contact the Office at 885-2133 and we will arrange to have the bin emptied.

During the 2012 budget process Council will be looking at options to improve our recycling program. Details will be provided once available.

It's not just for Seniors

The Prairie Lily Terrace Board is looking for at least 2 volunteers to become a member of the Sedley Housing Authority Board.

The purpose of this Board is to oversee the Prairie Lily Terrace and the amenities offered by the senior's housing complex.

If you are interested in joining this Board, please contact

Fran Deck at 885-2114

or

Bryan Leier at 885-2142.

or

Village Office at 885-2133



Outstanding Water / Sewer Accounts

As mentioned in the December 2011 newsletter, during the year end process any outstanding water / sewer balances are transferred to your tax account.

The amount transferred then begins to accumulate penalties at a rate of **2% / month** beginning

January 1st, 2012.

Recently you may have received a letter from Dudley & Company, the Village auditor indicating you have an outstanding amount owing on your tax account. This outstanding balance is likely the result of not paying your 4th quarter water / sewer bill.

As penalties have accumulated, you will want to contact the Office to find out your new balance. Please make arrangements to bring your account up-to-date as soon as possible.

Water / Sewer accounts that transfer over to Taxes accrue penalties at 2% / month!

Sedley Landfill Update

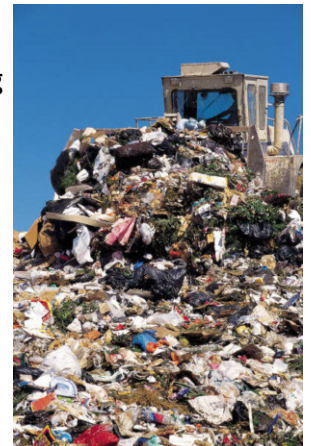
Village Council is pleased to extend use of the Sedley Landfill to residents outside the Village. Landfill tags for out-of-town residents can be purchased starting at \$10 / tag. Residents can purchase landfill tags starting at \$5 / tag. For all the details regarding the Sedley Landfill pricing schedule, please log onto our

web site [www.villageofsedley.com/about us/Sedley Landfill](http://www.villageofsedley.com/about-us/Sedley-Landfill).

Residents are reminded that the key to the dump will NOT be given out. The schedule of Landfill hours is located in the Events Calendar on our web site.

Alternative arrangements may be

made by calling Len at 885-2136 however, we do not guarantee he will be able to accommodate your request.



In Other News

We've noticed a number of residents are shoveling the snow from their driveways on to the streets - this impedes Len's ability to clean the streets quickly and effectively. Please refrain from doing this.

A reminder that sledding is NOT permitted within Sedley limits. Please take your snow machine out of town to enjoy your ride.

Moving forward with our strategic plan Village Council met with the RM of Francis to discuss future initiatives.

On February 3rd, the Village of Sedley was visited by a group of Chinese investors interested in investment opportunities in our Village.

The Mayor and Deputy Mayor toured the delegation around town showcasing our community.



Your Village Council

Mayor: Bryan Leier

Deputy Mayor: Gerard Parent

Councillors: Merv Klein
Shawn Forbes
| Graham Anderson

As a member of Council each councillor is assigned to various committees that operate within Sedley.

The Mayor and / or Councillors participate on various volunteer boards in Sedley in addition to their responsibilities on Council.

Committee Responsibilities:

Water / Sewer -

Graham Anderson

Finance –

Bryan Leier, Gerard Parent

Fire Department –

Shawn Forbes, Bryan Leier, & Gerard Parent

Sedley Rink Board –

Gerard Parent, Mervyn Klein

Sedley Gym Hall –

Gerard Parent, Shawn Forbes & Bryan Leier

Streets & Sidewalks –

Mervyn Klein

Library –

Gerard Parent

Parks & Recreation –

Bryan Leier

School Community Council – Gerard Parent, Bryan Leier

Sedley Day Care –

Gerard Parent, Bryan Leier

Sedley Youth Centre –

Shawn Forbes

Sedley 1st Responders -

Shawn Forbes
